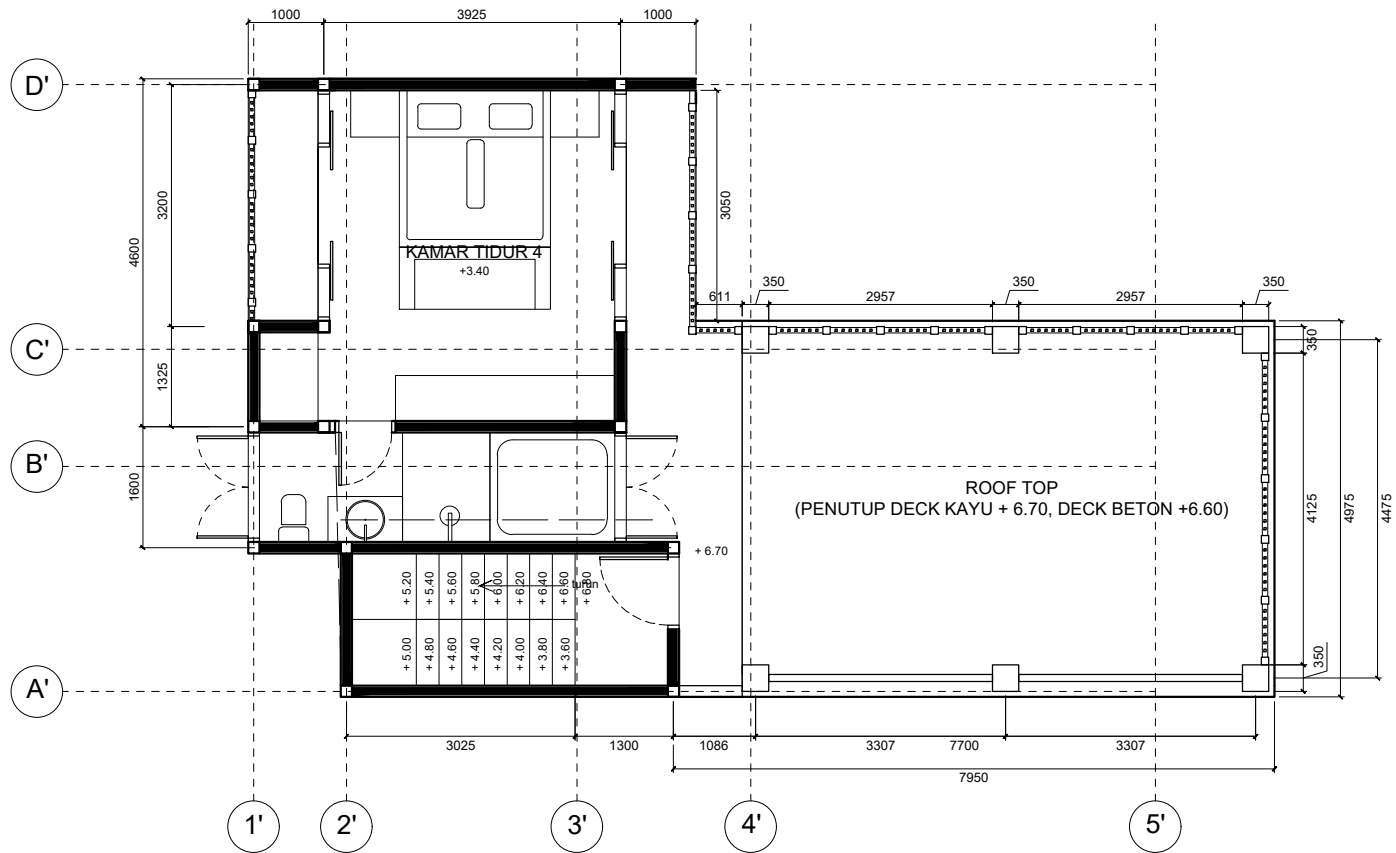


Denah Lantai 2 #1

1: 100



Denah Lantai 3 #1

1: 100



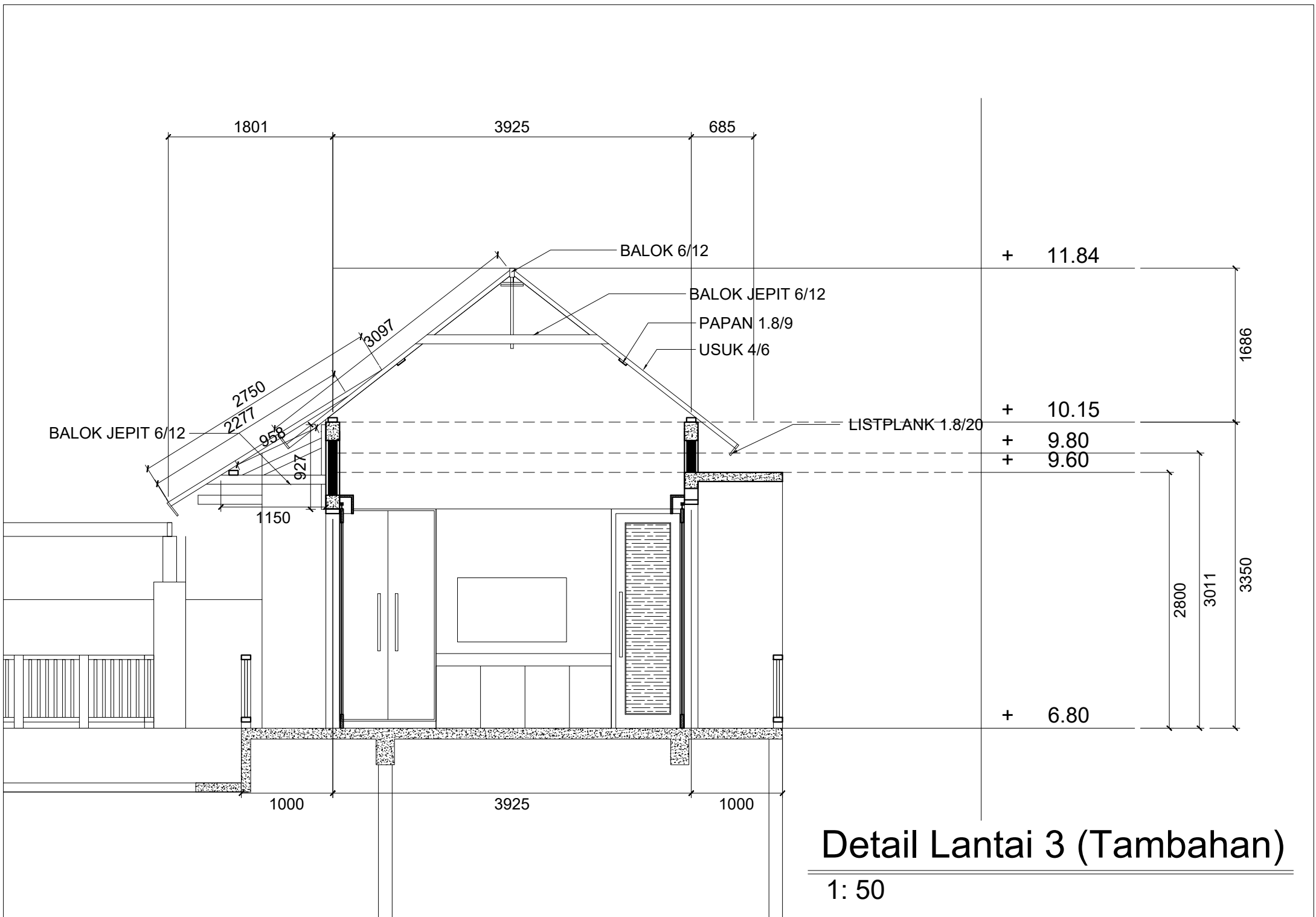
Tampak depan

1: 100



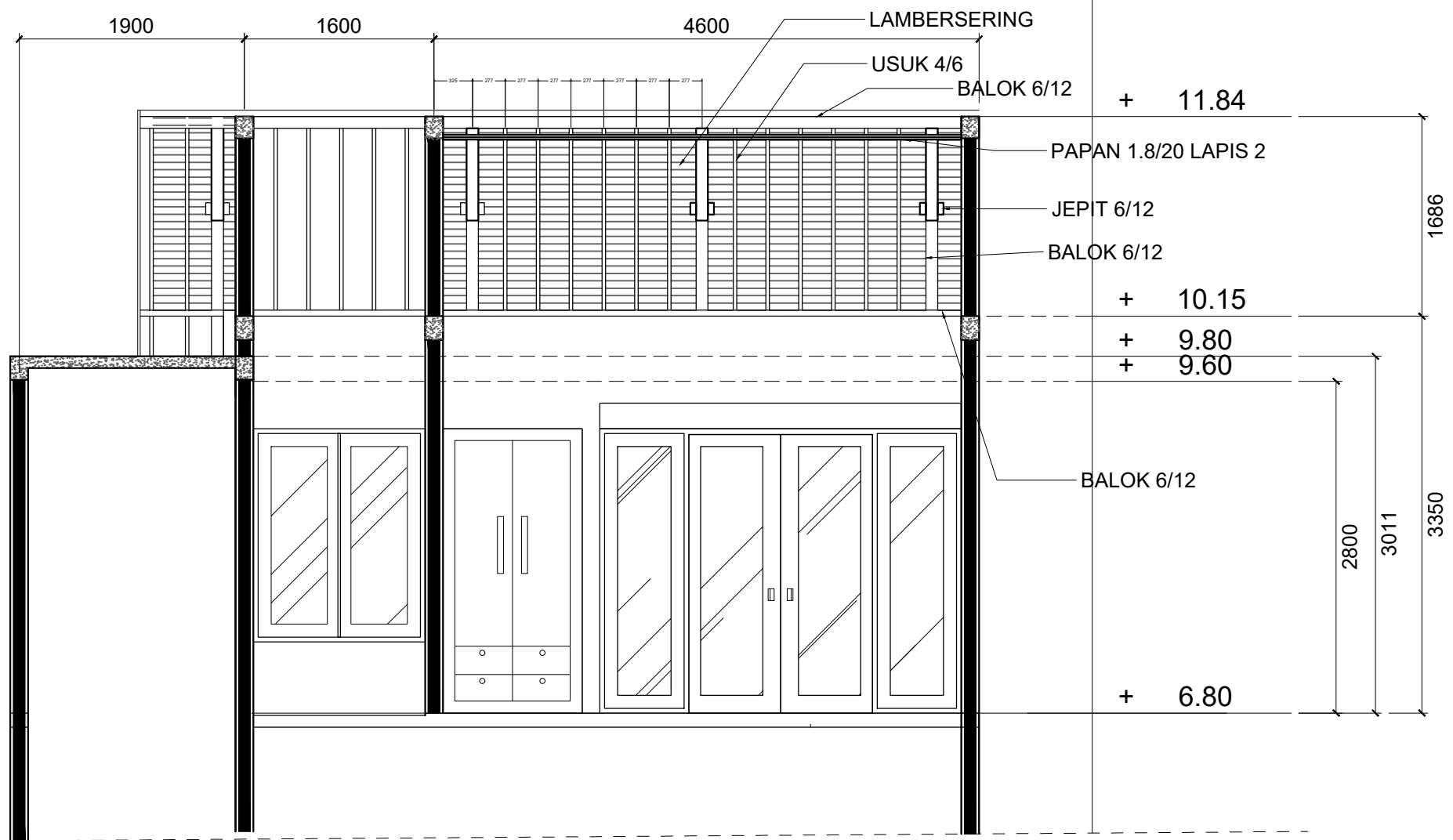
Tampak Samping

1: 100



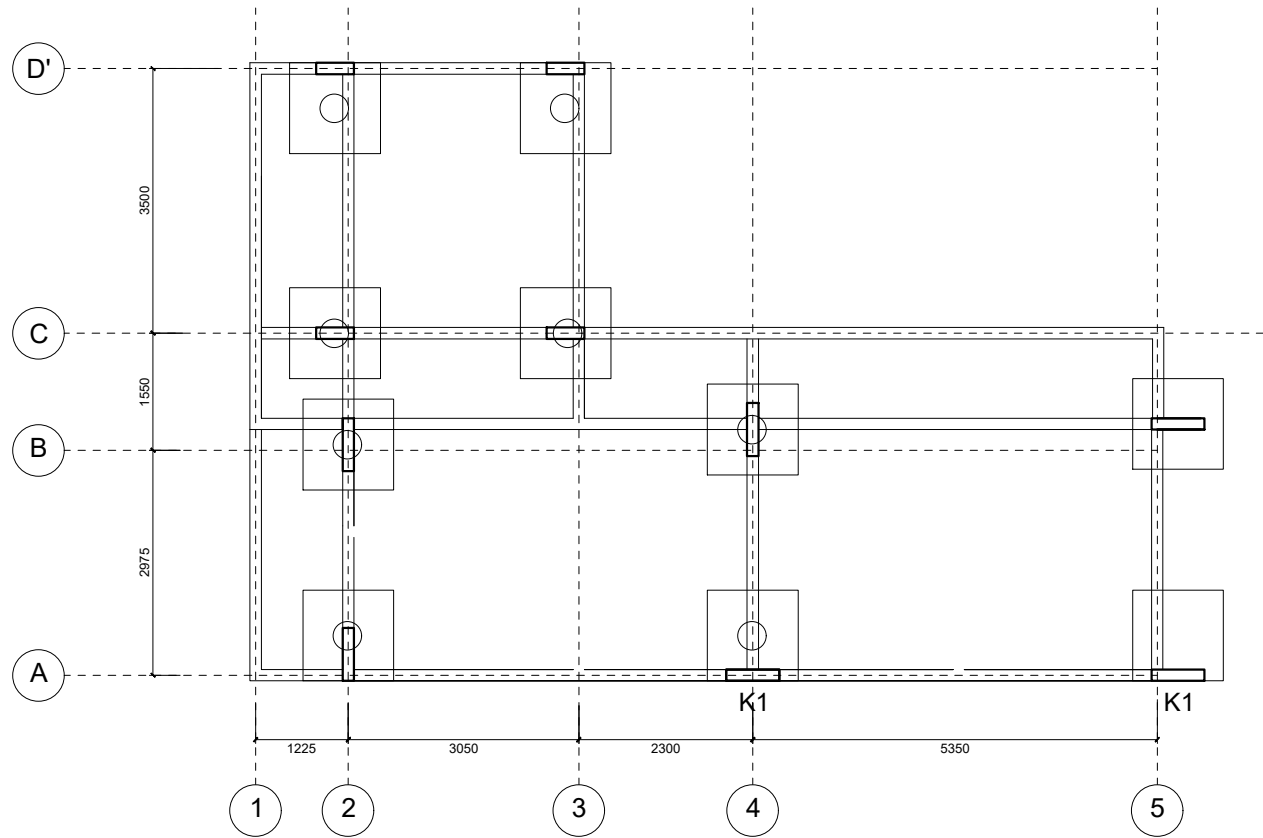
Detail Lantai 3 (Tambahan)

1: 50



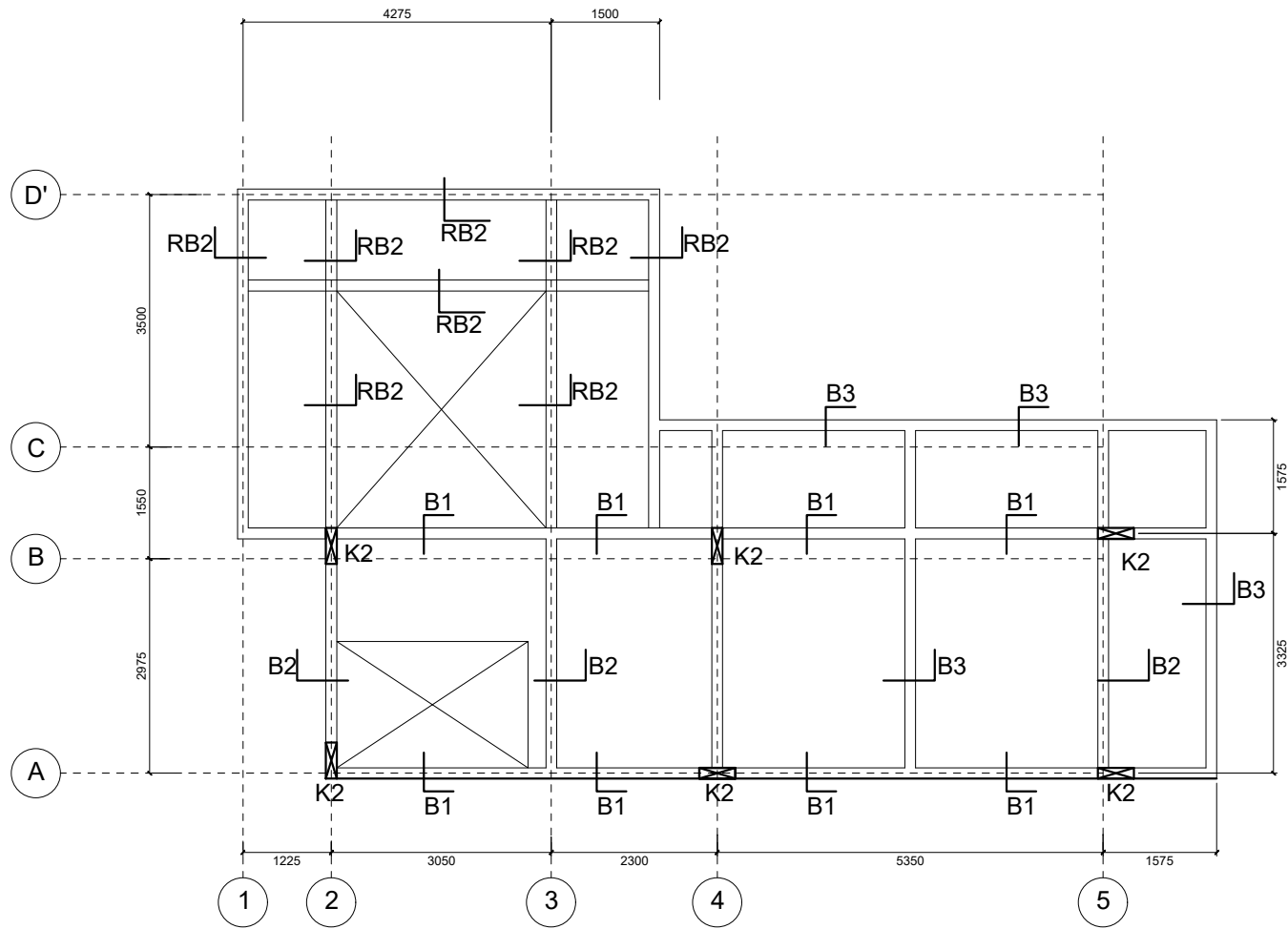
Detail Lantai 3 (Tambahan)

1: 50



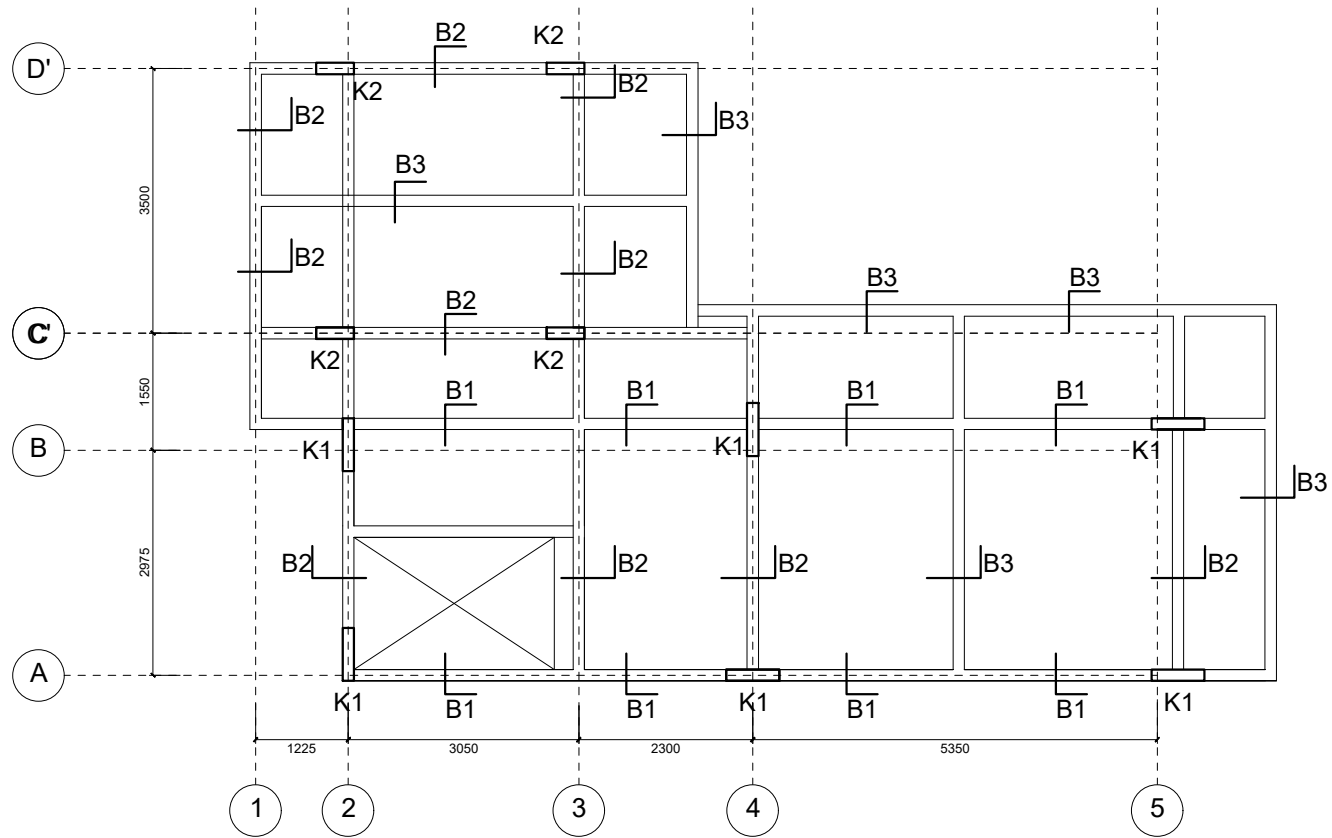
Rencana Pondasi dan Sloof

1: 100



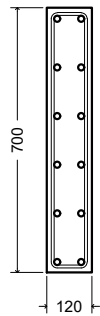
Rencana Kolom dan Balok Lt. 3

1: 100



Rencana Kolom dan Balok

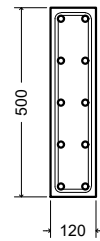
1: 100



- Pembesian
- 12 D16 (besi utama)
 - Ø8 - 100 (besi sengkang/begrel)

Detail kolom K1

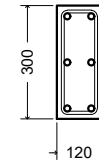
1: 20



- Pembesian
- 10 D16 (besi utama)
 - Ø8 - 100 (besi sengkang/begrel)

Detail kolom K2

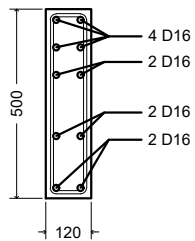
1: 20



- Pembesian
- 6 Ø10 (besi utama)
 - Ø8 - 100 (besi sengkang/begrel)

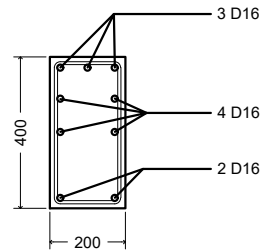
Detail kolom K3

1: 20



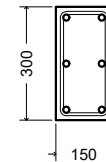
Detail balok B1 (Balok Utama)

1: 20



Detail balok B2 (Balok Utama)

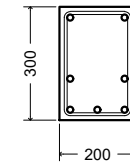
1: 20



- Pembesian
- 6 D13 (besi utama)
 - Ø8 - 150 (besi sengkang/begrel)

Detail balok B3 (Balok Anak)

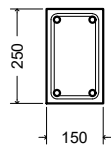
1: 20



- Pembesian
- 7 D16 (besi utama)
 - Ø8 - 150 (besi sengkang/begrel)

Detail Sloof

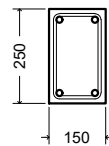
1: 20



- Pembesian
- 4 D13 (besi utama)
 - Ø8 - 150 (besi sengkang/begrel)

Detail RB1 (Ring Balok)

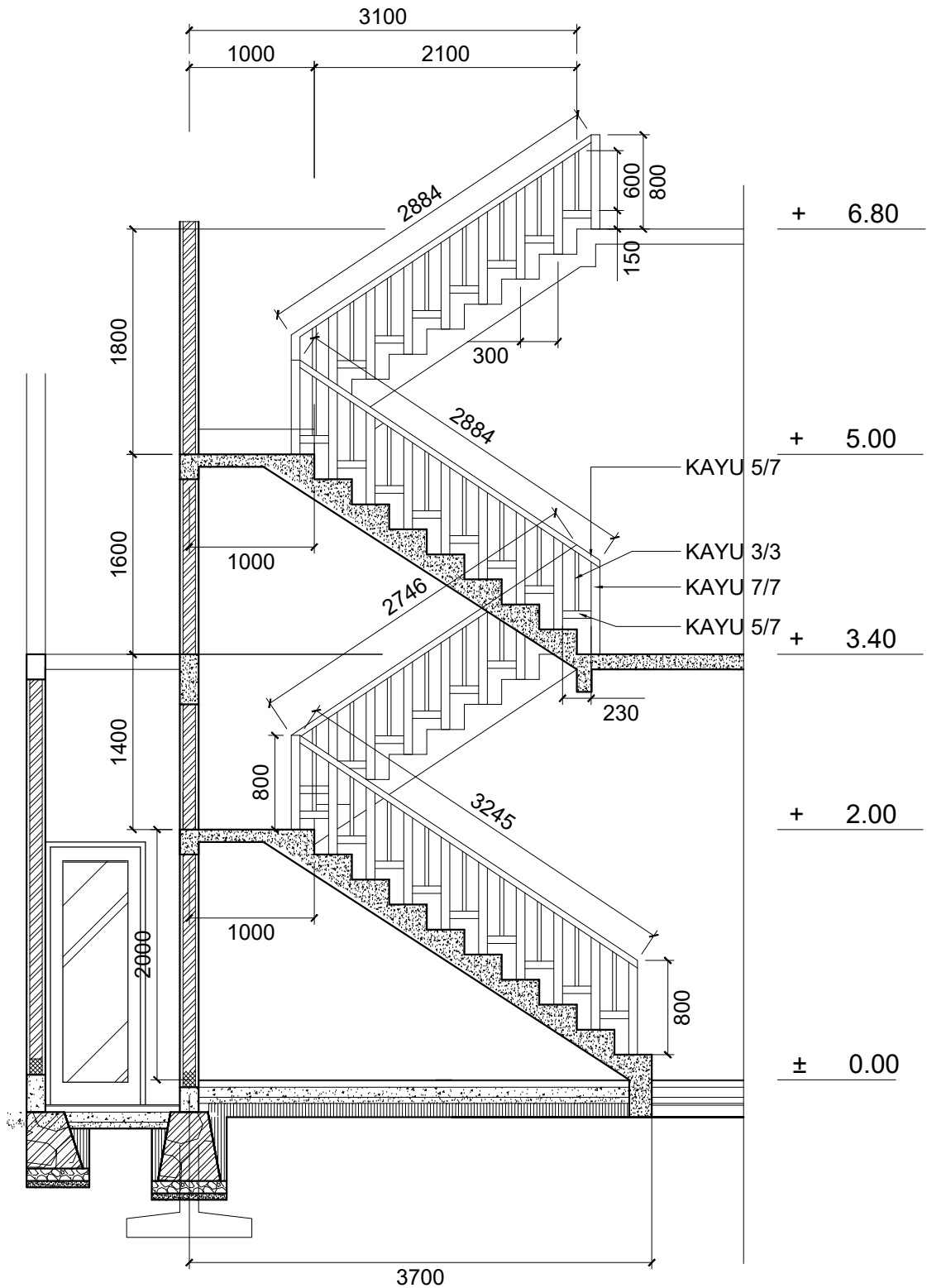
1: 20



- Pembesian
- 4 Ø10 (besi utama)
 - Ø8 - 150 (besi sengkang/begrel)

Detail RB2 (Ring Balok)

1: 20

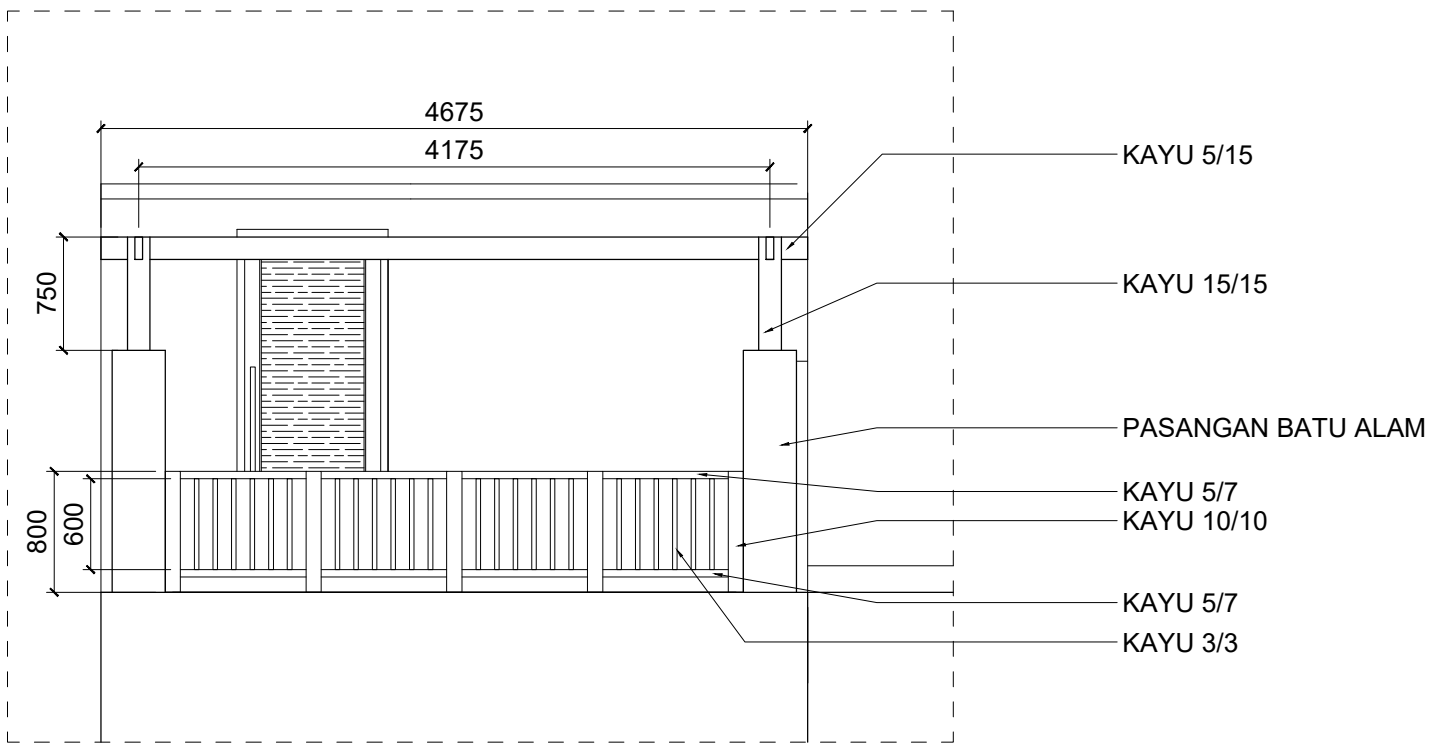


DETAIL RELING TANGGA

1: 50

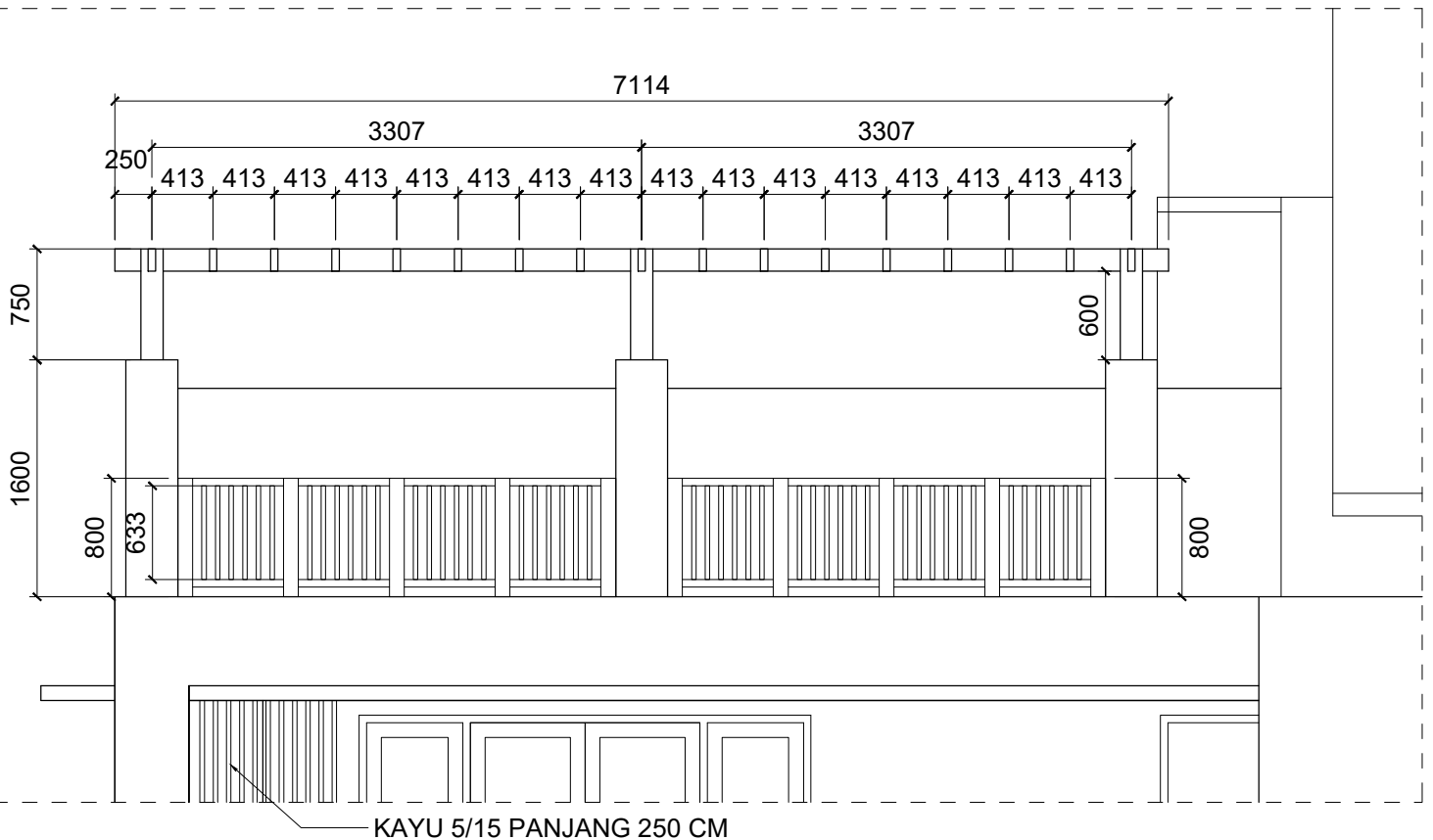
KEBUTUHAN KAYU RELING TANGGA

- KAYU BALOK 7/7 panjang 85 cm = 78 batang
- KAYU BALOK 5/7 panjang 4 m = 36 batang
- kayu reng 3/3 panjang 50 cm = 72 batang
- PAPAN KAYU 2/32 PANJANG 95 CM = 100 buah
- PAPAN KAYU 2/21 PANJANG 95 CM = 38 buah



DETAIL TAMPAK DEPAN KAYU PERGOLA

1: 50

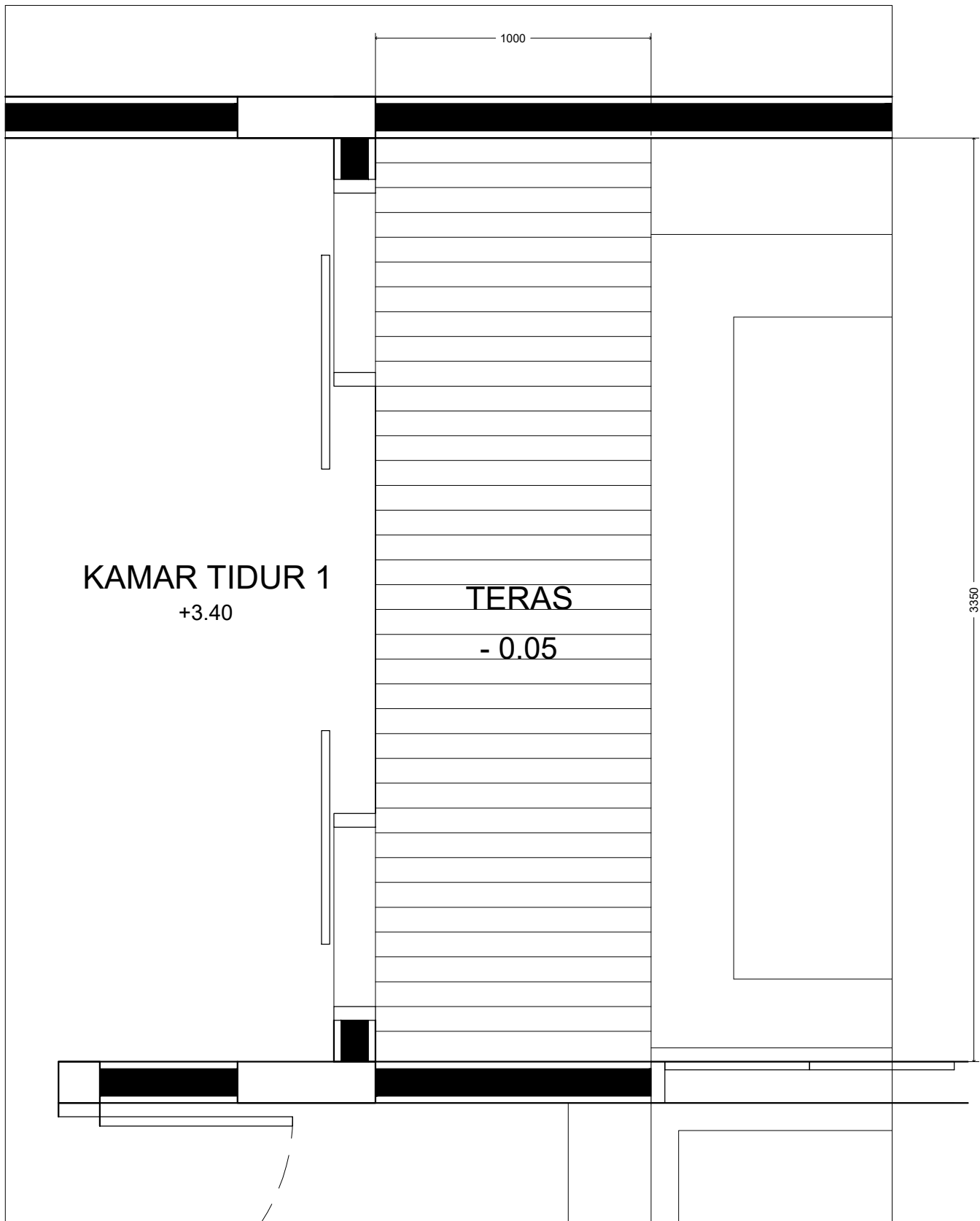


DETAIL TAMPAK SAMPING KAYU PERGOLA

1: 50

KEBUTUHAN KAYU PERGOLA ROOF TOP

- KAYU BALOK 5/15 panjang 3 m = 76 batang
- KAYU BALOK 15/15 panjang 80 cm = 12 batang

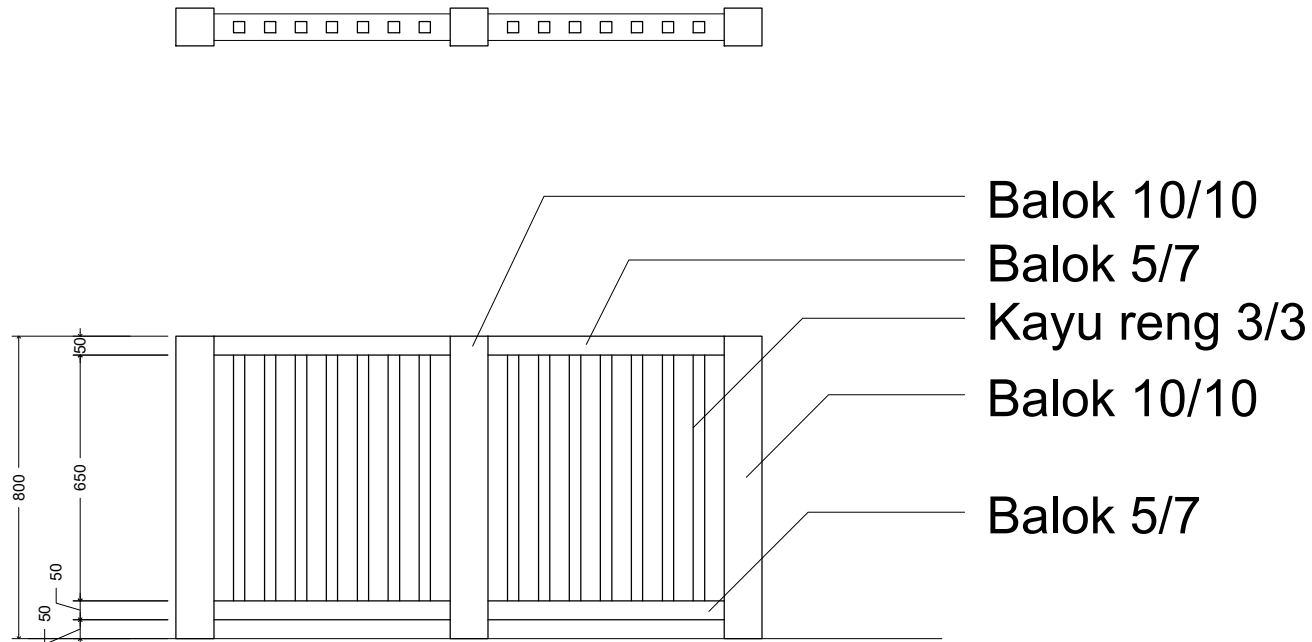


DETAIL TERAS DEPAN KAMAR LT.1

1: 20

KEBUTUHAN KAYU POOL DECK DAN LANTAI ROOF TOP

- Papan deck 3/9 panjang 110 cm = 84 batang
- Papan deck 3/9 panjang 250 cm = 348 batang
- Kayu balok 5/10 panjang 400 cm = 6 batang

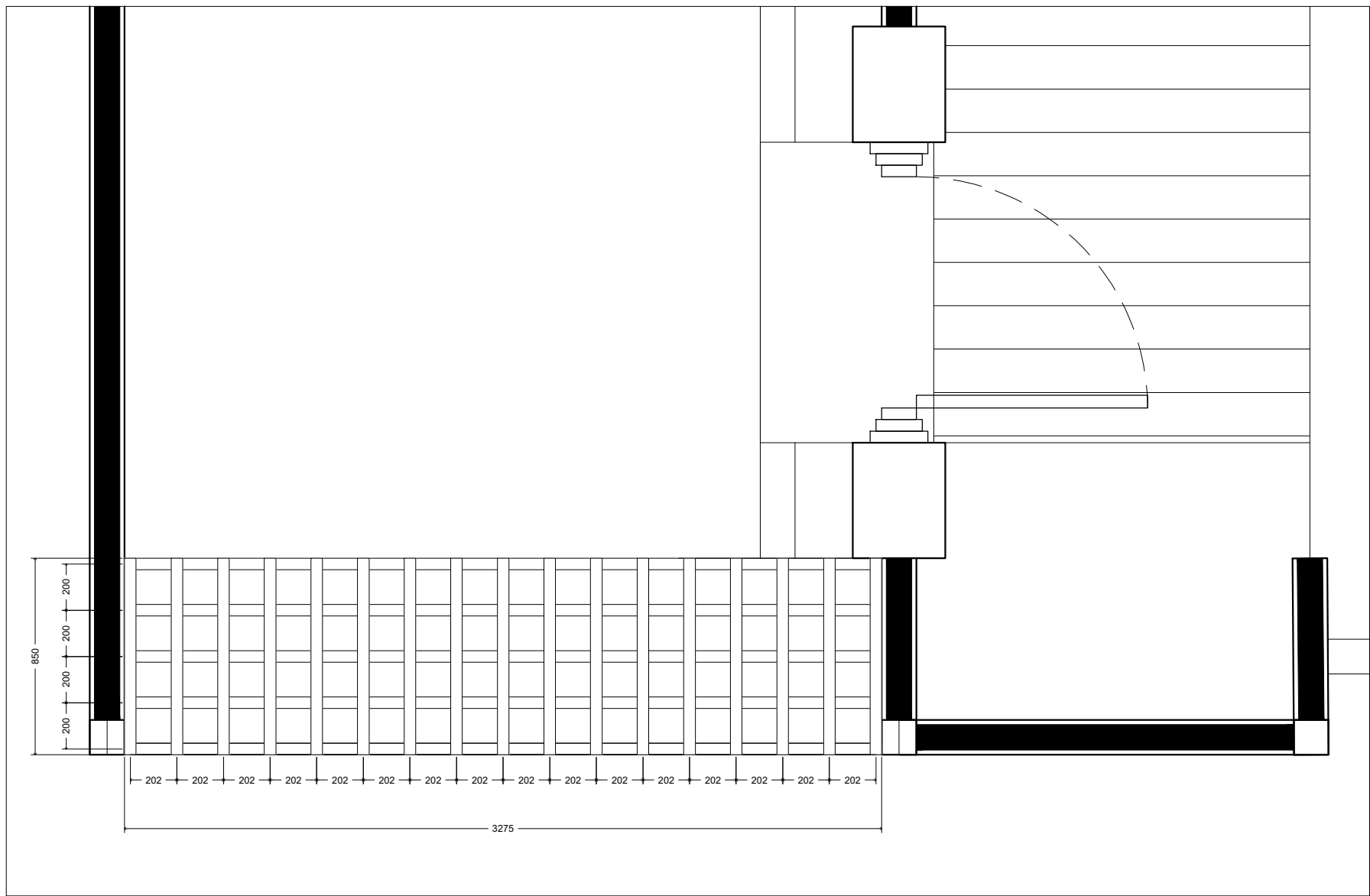


DETAIL RELING BALKON

1: 20

KEBUTUHAN KAYU RELING

- KAYU BALOK 10/10 panjang 80 cm = 70 batang
- KAYU BALOK 5/10 panjang 4 m = 28 batang
- KAYU RENG 3/3 panjang 65 cm = 390 batang
- KAYU BALOK 5/15 panjang 2,5 m = 38 batang



DETAIL ATAP PERGOLA

1: 50

KEBUTUHAN KAYU PERGOLA

- KAYU BALOK 5/7 PANJANG 330 CM = 10 BUAH
- KAYU BALOK 5/7 PANJANG 85 CM = 34 BUAH